



ROCKJUMPER
Wildlife Tours



American Birding®
ASSOCIATION



Sunda Clouded Leopard by Liew Weng Keong

BORNEO

Rainforest mammals extension

5th to 9th September 2024 (5 days)

Overview & Map.2

Your Tour in Detail2

Financial Arrangements4

Arrival & Departure Details. . . .4

INTRODUCTION

Borneo is home to rich tropical rainforests populated with a diversity of exciting mammals. This tour offers the ultimate experience exploring the Tabin Wildlife Reserve, holding one of the largest populations of the mythical Bornean Clouded Leopard, and the riparian forest of Sukau on the Kinabatangan River. The mammal-watching opportunities on this voyage are superb and we expect encounters with an exciting variety including 'the old man of the forest', the incomparable Bornean Orangutan, Proboscis Monkeys, with their strange pendulous nose and great pot belly, several species of gibbons, mischievous macaques, colorful langurs, several species of civets, wild cats, deer, and some very impressive squirrels, including giant flying squirrels and flying lemurs!

This tour promises an incredible, exotic blend of fabulous mammals, birds, and scenery; we greatly look forward to sharing the joys of this incomparable destination with you!

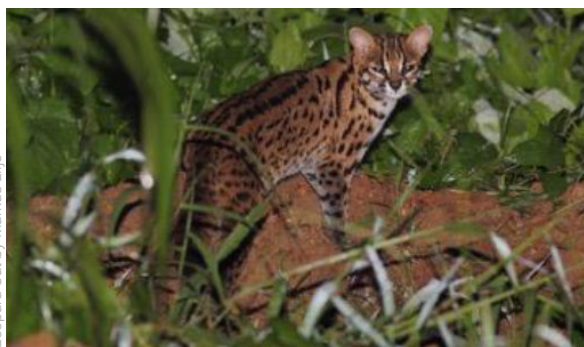
Day 1	Afternoon transfer from Lahad Datu to Tabin Wildlife Reserve
Day 2	Tabin Wildlife Reserve
Day 3	Tabin Wildlife Reserve
Day 4	Tabin Wildlife Reserve, and transfer to Kinabatangan River. Afternoon river cruise.
Day 5	Morning river cruise on the Kinabatangan River. Afternoon, transfer to Sandakan for connecting flight to Kota Kinabalu.

YOUR TOUR IN DETAIL

DAY 1: Afternoon transfer from Lahad Datu to Tabin Wildlife Reserve. From Lahad Datu, you will travel to the Tabin Wildlife Reserve which will serve as your home base for the next three nights. You will arrive in time to get acquainted and do some initial exploration.

DAYS 2 & 3: Tabin Wildlife Reserve. Considered to be the largest wildlife reserve anywhere in Malaysia, covering an immense area of some 300,000 acres, the Tabin Wildlife Reserve serves as the last stronghold for Sabah's three largest mammals, namely the Borneo Pygmy Elephant, Sumatran Rhinoceros, and Banteng. Although we would need to be exceedingly lucky to see the Rhino, we stand an excellent chance at seeing both others along with a host of other rarities over the course of two full days. We will endeavour to cover as much of the reserve as possible during the day and at night and notable mammal highlights here could include the Bearded Pig, Hose's Langur, Bornean Gibbon, and both the Pig-tailed and Long-tailed Macaques while our nocturnal forays could deliver the Common Palm, Masked Palm, Small-toothed Palm and Banded Palm Civets,

Black and Giant Red Flying Squirrels, Leopard and Marbled Cats, Greater Mouse-Deer, and the Thick-spined Porcupine to name a few. Time spent in a hide along the river may also yield the Small-clawed and Smooth-coated Otters. Birding highlights could include up to eight species of hornbill including the Helmeted, Wreathed, Wrinkled, White-crowned, Malaysian Pied, Bushy-crested, Black and Rhinoceros Hornbills, Dusky and Black-and-Yellow Broadbills, Blue-eared and Black-backed Kingfishers, Red-naped Trogon, White-fronted Falconet, both the Blue-headed and Black-headed Pittas, Malaysian Blue Flycatcher, jewel-like Temminck's and Purple-throated Sunbirds, among others. Rarities include the Bornean Bristlehead, Giant Pitta, and Storm's Stork.



DAY 4: Tabin Wildlife Reserve to the Kinabatangan River. After some morning exploration, we will depart the Tabin Wildlife Reserve and make our way by vehicle to the famed Kinabatangan River. After familiarizing ourselves with our new home we have the opportunity to explore the lodge grounds. Birding here can be rather productive, and we may very well find Hooded Pitta, Orange-bellied Flowerpecker, Brown-throated Sunbird, Plaintive Cuckoo, Black-and-red and Black-and-yellow Broadbills, Short-tailed and White-chested Babblers and Rufous Piculet.

The concentration of wildlife here is, however, phenomenal and we will spend most of our time birding on productive boat trips on the main Kinabatangan River and its adjacent tributaries. These boat trips are simply amazing, allowing one to approach both birds and mammals at close range. Some of the wildlife we are likely to encounter on these trips include the rare Storm's Stork, Lesser Adjutant, Grey-headed and Lesser Fish Eagles, Oriental Darter, Blue-eared and Stork-billed Kingfishers, Blue-throated Bee-eater, Wrinkled, Black and Rhinoceros Hornbills, Silvered Langur, Long-tailed sub-species of Crab-eating Macaque, the bizarre Proboscis Monkey, Oriental Small-clawed Otter, Bornean Pygmy Elephant, Bornean Gibbon and even the striking black and yellow Mangrove Snake as well as Reticulated Python, the longest snake in the world, are both possible. If we are fortunate, we may encounter some of the Kinabatangan's rarer inhabitants such as Helmeted and White-crested Hornbills, White-fronted

Falconet, Wallace's Hawk-Eagle, Jerdon's Baza, Mustached Hawk-Cuckoo, Long-tailed Parakeet, the very rare and until recently mythical Bornean Ground Cuckoo, Flat-headed Cat, Maroon Langur and Southern Pig-tailed Macaque.



Binturong by Nigel Redman



Proboscis Monkey by David Shackelford

DAY 5: Kinabatangan River and depart for Sandakan for a connecting flight to Kota Kinabalu. Superb rainforest birding is to be had during our final morning along the Kinabatangan River. The surrounding area has unfortunately been reduced to endless tracts of commercial Oil Palm plantations with the result that nearly all the region's wildlife has been forced into a narrow strip of forest along the river. We have several more hours this morning to explore the Kinabatangan River and the surrounding rainforest by boat, following which we will depart for Sandakan where we will catch our connecting flight back to Kota Kinabalu where our tour will come to an end.

FINANCIAL ARRANGEMENTS AND IMPORTANT NOTES

The fee for the 5-day Borneo Rainforest Mammals extension is:

US\$6,550.00 per person sharing based on **2 participants** & 1 Rockjumper Wildlife tour leader;

US\$4,850.00 per person sharing based on **3 participants** & 1 Rockjumper Wildlife tour leader;

US\$3,950.00 per person sharing based on **4 participants** & 1 Rockjumper Wildlife tour leader;

US\$3,750.00 per person sharing based on **5 participants** & 1 Rockjumper Wildlife tour leader;

US\$3,450.00 per person sharing based on **6 participants** & 1 Rockjumper Wildlife tour leader.

The single supplement cost is US\$750.00 and will be charged if you wish to have single accommodation. If RWT cannot provide you with a rooming partner although you choose to share, the single supplement will become applicable. We will make all reasonable efforts to ensure that a rooming partner is found if you do wish to share.

The tour fee includes:

- All meals from dinner on Day 1 to lunch on Day 5;
- Bottled Water;
- All lodgings;
- Ground transportation;
- Reserve entrance fees;
- 3-hour night excursions in the Tabin Wildlife Reserve;
- Boat fees for the Kinabatangan River;
- One-way internal flight from Sandakan to Kota Kinabalu (Day 5);
- Guide costs;
- Local staff gratuities; and
- Services of a Rockjumper Wildlife tour leader.

The tour fee does not include:

- Visa fees;
- ANY International flights;
- Any beverages other than Bottled water; and
- Special gratuities, telephone calls, laundry and items of a personal nature.

PLEASE NOTE:

- a) Due to constantly fluctuating exchange rates, we quote our tours in 4 currencies. The tour price is however fixed only in the currency printed in bold, and the actual cost in the other currencies listed will be adjusted according to prevailing exchange rates at the time of final invoicing (usually 4 months before the tour.) The same applies to approximate flight and single supplement rates, which are also quoted in the respective fixed currency. Please note that even though internal flight costs have been quoted separately, the Rockjumper office will still book these flights for you at no extra charge.
- b) Rates are based upon group tariffs; if the tour does not have sufficient registration a small party supplement will have to be charged.
- c) Furthermore, these costs are subject to unforeseen increases in tour related costs and may have to be adjusted as a result.
- d) Lastly, we may be forced to change or alter the itinerary and / or the designated Rockjumper leader/s at short or no notice due to unforeseen circumstances; please be aware that we will attempt to adhere as close to the original program as possible.

TIPPING:

As noted above, gratuities (drivers, hotel staff, restaurants etc.) are included on this tour. However, if you feel that your Rockjumper tour leader and/or any local guides have given you exceptional service, it is entirely appropriate to tip them. However, we emphasize that such tips should be at your own discretion and based solely on the level of your service satisfaction.

ARRIVAL AND DEPARTURE DETAILS:

The main tour begins in Lahad Datu on Day 1 of the tour. The tour concludes in Kota Kinabalu on Day 5 in the late afternoon/early evening. Please ensure that your international flights leave after 21:00pm. If you would like to arrive early or depart late, please do let the Rockjumper office know and we will be happy to arrange extra accommodation for you.

The above information in respect of arrivals and departures is a guide only. Precise arrival and departure information will be sent to you in your Tour Confirmation package once the tour has been officially confirmed. If you wish to arrive early and/or depart late and would like assistance in this regard, kindly contact the Rockjumper office. Borneo Rainforest Mammals 2024

IMPORTANT: please DO NOT book your international flights until you have consulted the Rockjumper office for confirmation on the status of the tour.

Additional notes:

- It is important for your comfort and for that of your fellow travelers that you do not over-pack. Kindly stick to 20kgs for check in luggage and 8kg's for hand luggage.
- Fitness: This Borneo tour does require a reasonable level of fitness; participants should be in good general health as most of our days will be spent exploring for mammals on foot, and may require walking for several hours at a time. Generally walking will be easy and on flat ground however some trails in the rainforest may be quite steep and slippery, especially after rain.
- Accommodation throughout the trip is of a generally good standard, and the hotels and resorts that we make use of is clean and comfortable.
- In some areas it can be hot especially at midday. We will make a number of early mornings starts to maximize the most pleasurable time in the field.